

# SANDY GREY LIGHT

森蒂浅灰

MN267A

## DESCRIPTION

纯正色感干净而细腻，浅灰的高级，带来焕然一新的视觉冲击，令人感受自在、沉浸空间内的舒适。

The color is clean and delicate, and the light gray is high-end, bringing a new visual impact, making people feel free and immersed in the comfort of the space.

## SPECIFICATION

Size: 1200X2700X6mm  
108" X 48" X 1/4"

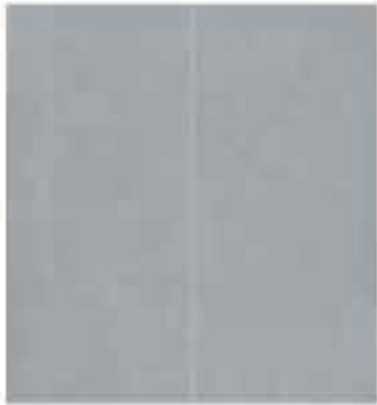
哑光面 / Satin(Matt)



## ITEM NO.

MN267AP271 206

## FACE CONTINUITY







# Technical Features

技术特性

BEYOND ARTS FASHION

PHYSICAL PROPERTIES	REGULATION	REQUIRED VALUE	MOREROOM AVERAGE VALUES
DIMENSIONS	ISO 10545-2	± 0,6% max   length and width	± 0,1%   length and width
		± 5% max   Thickness	± 5%   Thickness
		± 0,5% max   Linearity	± 0,1%   Linearity
		± 0,5% max   Wedging	± 0,1%   Wedging
		± 0,5% max   Warpage	± 0,2%   Warpage
WATER ABSORPTION	ISO 10545-3	≤ 0,5 %	0.05% - 0.08%
MODULS OF RUPTURE (R)	ISO 10545-3	≥ 35 N/mm <sup>2</sup>	49 N/mm <sup>2</sup>
BREAKING STRENGHT (S)	ISO 10545-4	< 7,5mm = ≥ 700 N	Conforms
DEEP ABRASION RESISTANCE	ISO 10545-6	max 175 mm <sup>3</sup>	140 mm <sup>3</sup>
COEFFICIENT OF	ISO 10545-8	9x10 <sup>-6</sup> °C <sup>-1</sup>	6,5x10 <sup>-6</sup> °C <sup>-1</sup>
LINEAR THERMAL EXPANSION			
RESISTANCE TO THERMAL SHOCKS	ISO 10545-9	No sample must show alterations to surface	Available on request
FROST RESISTANCE	ISO 10545-12	No sample must show alterations to surface	Available on request
RESISTANCE TO CHEMICAL PRODUCTS	ISO 10545-13	Resistance to household chemicals and pool additives (min. class B)	A
		Resistance to acids and alkalis at low concentration	LB
		Resistance to highly concentrated acid and alkaline products	HB
STAIN RESISTANCE	ISO 10545-14	No sample must show alterations to surface	Stains removed by hot water (without detergent)
RESISTANCE TO LIGHT	DIN 51094	No sample must show alterations to surface	No change in brightness or colour of samples
FRICION COEFFICIENT	BCRA REP CEC 6/81	0.40 ≤ μ ≤ 0.74	>0.4
REACTION TO FIRE	96/603/CE	Not applicable	A1 – A1FL
NOTES	*The slip resistance, static or dynamic coefficient of friction values shown in the catalog and in the Safe System table are to be considered purely indicative and not binding. Any specific need must be confirmed by us at the time of the order and in any case always before installation.		

# Product performance

## 产品性能

Moreroom passes the certifications including ISO 9001 | ISO 50001 | ISO 14001 | EU EMAS | GREENGUARD | CCC | LEED | AEO, etc. From raw materials purchasing, monitoring of the production process, and the delivery of finished products, all the accusations of people, machines, materials, and procedures are strictly controlled in digitization, dramatization, and standardization. With international certification, Moreroom products are more environmental-friendly and healthy, providing people with a safe and methanol-free environment.

Moreroom通过ISO 9001 | ISO 50001 | ISO 14001 | 欧盟EMAS | GREENGUARD | CCC | LEED | AEO认证, 从原料进厂、生产过程监控、成品出厂所有环节的人、机、料、法各指控点都进行批量化、数据化、标准化严格控制, 具备国际权威认证, 产品环保健康, 更加安全, 能够给予人们健康、安全、无甲醇的环境。



 ULTRA-REALISTIC 超逼真	 TOUGHNESS 超强韧性
 6+MOHS HARDNESS 6+级莫氏硬度	 10+COLOR CHANNELS 10色彩通道
 RICH COLORS &TEXTURE 花色丰富	 FOOD GRADE SURFACE 食品级表面
 WATERPROOF 抗渗	 SCRATCH RESISTANT 耐划刮
 RESISTANT TO HIGH TEMPERATURES 耐高温	 EASY TO CLEAN 易于清洁
 HYGIENIC 卫生	 100% NATURAL 100%天然
 RESISTANT TO UV RAYS 防紫外线	 RECYCLABLE 可循环
 LIGHTWEIGHT 轻盈	 RESISTANT TO BENDING 抗弯折





MOREROOM

·STONE·

Beyond Arts Fashion



# 与我们联系

# Contact Us



FOSHAN MONO BUILDING MATERIAL CO.,LTD.  
MOREROOM STONE CO., LTD.

Marketing Center: No.1 Building, West Area, Green Plaza, No.129  
Jihua West road, Foshan City, Guangdong, China  
Manufacturing Add: No.325 National Highway, Xiadong County,  
Yunfu City, Guangdong, China